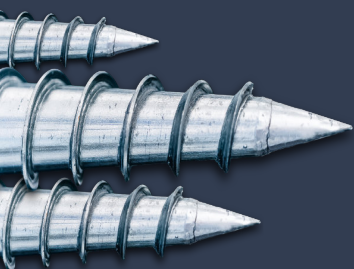
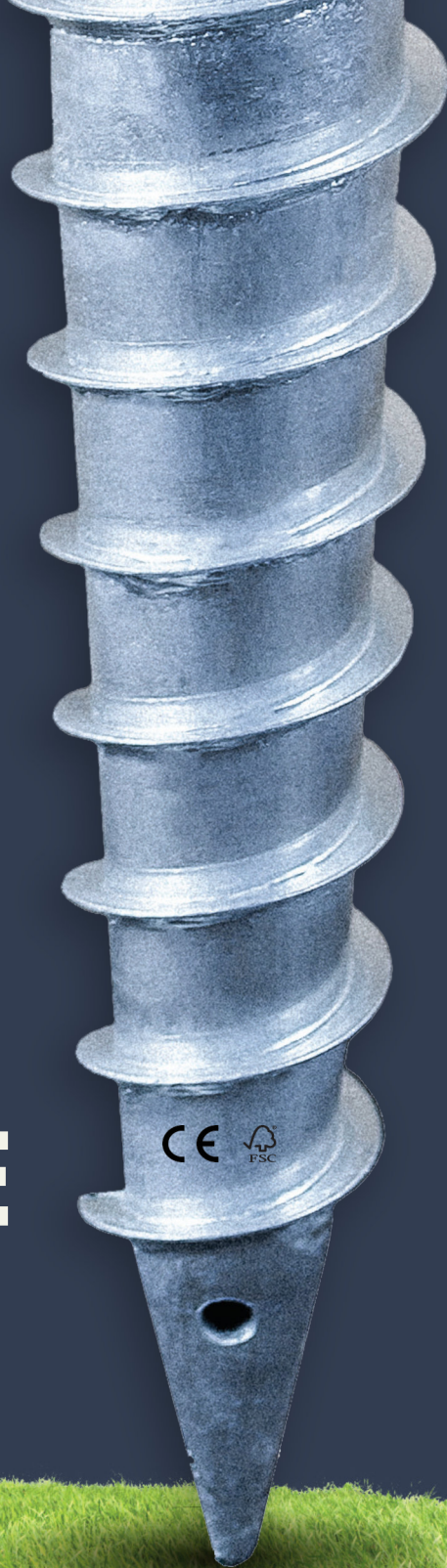




ȘURUBURI FUNDAȚIE



**PROCES USOR
FACTURI REDUSE
MEDIU CURAT**



**INSTALARE
RAPIDA**



**SOLUTIE
ECONOMICA**



**PRODUS
SUSTENABIL**



**FARAB
ETON**



**FARA
SAPATURI**

PROFIL M

Ø68

Ø76

Ø89

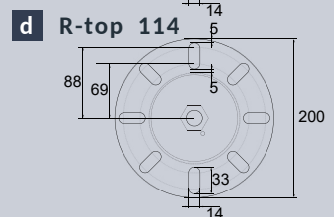
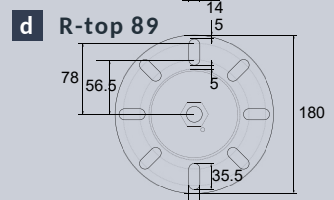
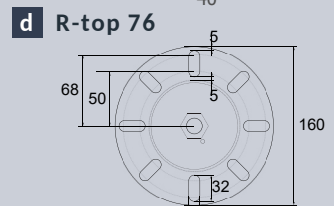
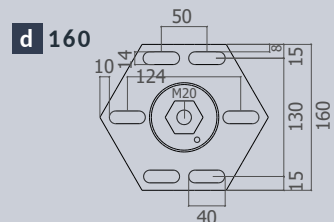
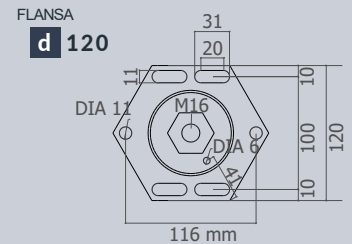
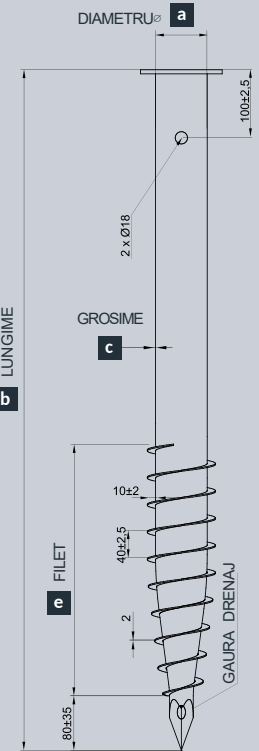
Ø114



Informatii Tehnice	DIAMETRU	Ø LUNGIME	GROSIME	FLANSA	FILET	GREUTATE
	mm	mm	mm		mm	kg
M 68x550x1.8 - M16	68	550	1.8	120	240	2.9
M 76x800x2 - M16	76	800	2	120	400	3.8
M 76x1000x3 - M16	76	1000	3	120	400	4.5
M 76x1300x3 - M16 - R	76	1300	3	R 76	640	8.3
M 76x2100x3.5 - M16	76	2100	3.5	160	880	15.4
M 76x3000x3.75 - M16	76	3000	3.75	160	1120	23.4
M 89x1500x3.5 - M16 - R	89	1500	3.5	R 89	840	12.5
M 114x1300x3 - M20	114	1300	3	160	800	13.2
M 114x1500x3.5 - M20 - R	114	1500	3.5	R 114	840	17.8
M 114x2000x3.75 - M20 -R	114	2000	3.75	R 114	1100	24.5
	a	b	c	d	e	

Sarcini maxime suportate in sol semi-solid			
	APASARE, kN (kg)	TRACTIUNE, kN (kg)	INCOVOIERE, kN (kg)
M 68x550x1.8 - M16	3 (306)	2 (204)	0.75 (76)
M 76x800x2 - M16	12.5 (1275)	6.5 (663)	3.4 (347)
M 76x1000x3 - M16	16.5 (1683)	9.5 (969)	4.5 (459)
M 76x1300x3 - M16	24 (2447)	12.3 (1254)	6.3 (642)
M 76x2100x3.5 - M16	42 (4283)	31 (3161)	11 (1122)
M 76x3000x3.75 - M16	55 (5608)	35 (3569)	14 (1428)
M 89x1500x3.5 - M16 -R-top	36.4 (3671)	20.4 (2060)	9.4 (948)
M 114x1300x3 - M20	40 (4079)	21 (2141)	10 (1020)
M 114x1500x3.5 - M20 - R-top	45 (4545)	26 (2626)	12.8 (1293)
M 114x2000x3.75 - M20 -R-top	65 (6565)	36.2 (3656)	16 (1616)

1 kN ~ 101,97 kg. Toate valorile sunt aproximative și pot fi utilizate ca estimări pentru calculele inițiale. Testele de încărcare reale sunt obligatorii! Producătorul nu este responsabil pentru daunele cauzate din cauza erorilor în calculul încărcăturilor.



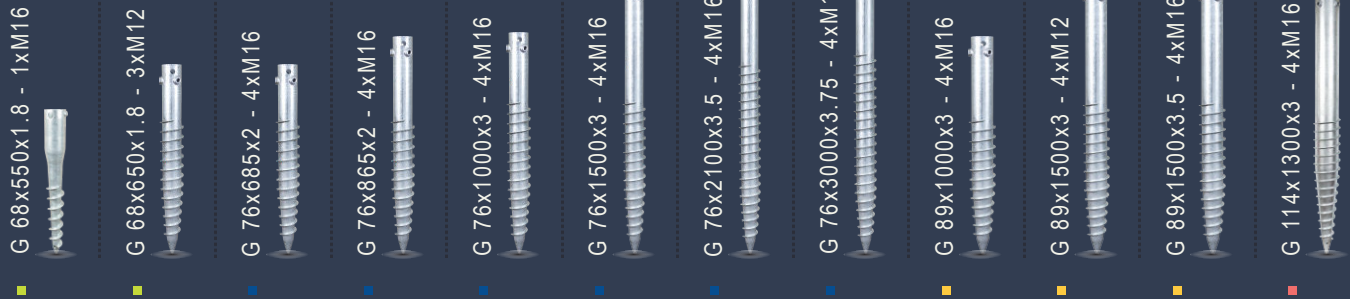
PROFIL G

Ø 68

Ø 76

Ø 89

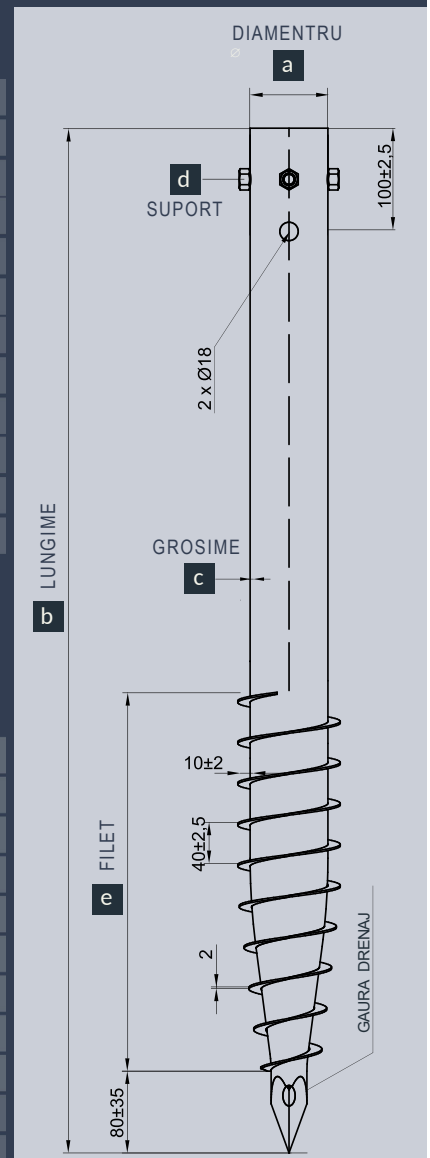
Ø 114



Informatii Tehnice	DIAMETRU	Ø	LUNGIME	GROSIME	SUPORT	FILET	GREUTATE
	mm		mm	mm		mm	kg
G 68x550x1.8 - 1xM16	68		55	1.8	1 x M 16	240	1.6
G 68x650x1.8 - 3xM12	68		650	1.8	3 x M 12	400	2.2
G 76x685x2 - 4xM16	76		685	2	4 x M 16	280	2.8
G 76x865x2 - 4xM16	76		865	2	4 x M 16	400	3.6
G 76x1000x3 - 4xM16	76		1000	3	4 x M 16	400	5.7
G 76x1500x3 - 4xM16	76		1500	3	4 x M 16	840	9.2
G 76x2100x3.5 - 4xM16	76		2100	3.5	4 x M 16	880	14.7
G 76x3000x3.75 - 4xM16	76		3000	3.75	4 x M 16	1120	22
G 89x1000x3 - 4xM16	89		1000	3	4 x M 16	400	7.5
G 89x1500x3 - 4xM12	89		1500	3	4 x M 12	840	10.2
G 89x1500x3.5 - 4xM16	89		1500	3.5	4 x M 16	84	12.9
G 114x1300x3 - 4xM16	114		1300	3	4 x M 16	0	11.6
	a		b	c	d	e	

Sarcini maxime suportate in sol semi-solid	↓ KG ↓		↑ KG ↑		← KG →	
	APASARE, kN (kg)	TRACTIUNE, kN (kg)	INCOVOIERE, kN(kg)			
G 68x550x1.8 - 1xM16	2.5 (255)	1.7 (173)	0.5 (51)			
G 68x650x1.8 - 3xM11	3 (303)	2 (207)	0.75 (76)			
G 76x685x2 - 4xM16	4.5 (459)	4 (408)	2 (204)			
G 76x865x2 - 4xM16	13 (1326)	6.6 (673)	3.6 (367)			
G 76x1000x3 - 4xM16	16.5 (1683)	9.5 (969)	4.5 (459)			
G 76x1500x3 - 4xM16	31 (3161)	18.5 (1886)	7.5 (765)			
G 76x2100x3.5 - 4xM16	42 (4283)	31 (3161)	11 (1122)			
G 76x3000x3.75 - 4xM16	55 (5608)	35 (3569)	14 (1428)			
G 89x1000x3 - 4xM16	19 (1920)	10.5 (1060)	6 (611)			
G 89x1500x3 - 4xM12	36 (3671)	20.2 (2060)	9.3 (948)			
G 89x1500x3.5 - 4xM16	36 (3671)	20.2 (2060)	9.3 (948)			
G 114x1300x3 - 4xM16	40 (4079)	21 (2141)	10 (1020)			

1 kN ~ 101,97 kg. Toate valorile sunt aproximative și pot fi utilizate ca estimări pentru calculele inițiale. Testele de încărcare reale sunt obligatorii! Producătorul nu este responsabil pentru daunele cauzate din cauza erorilor în calculul încărcăturilor.

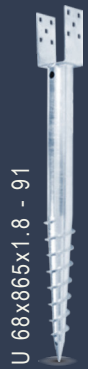


PROFIL U

Ø 68



U 68x685x1.8 - 71



U 68x865x1.8 - 91

Ø 76



U 76x1135x2.5 - 101

Ø 114



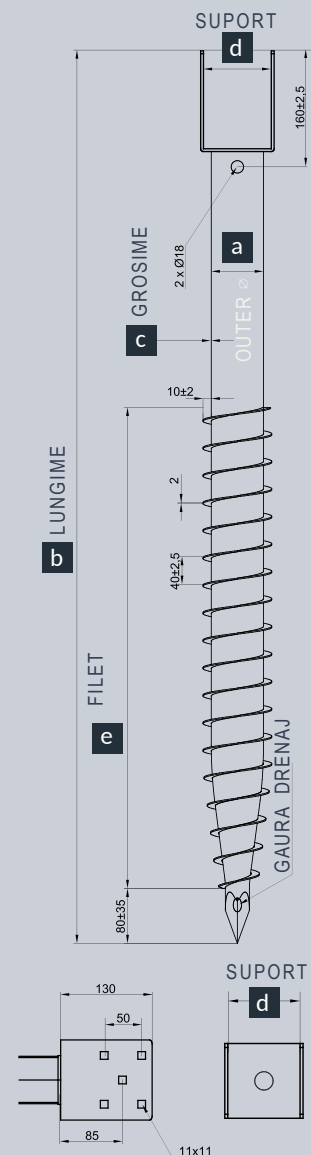
U 114x1300x3 - 121

Informatii Tehnice	DIAMETRU Ø	LUNGIME	GROSIME	SUPPORT	FILET	GREUTATE
	mm	mm	mm	mm	mm	kg
U 68x685x1.8 - 71	68	685	1.8	71	280	2.6
U 68x865x1.8 - 91	68	865	1.8	91	280	3.2
U 76x1135x2.5 - 101	76	1135	2.5	101	600	7.1
U 114x1300x3 - 121	114	1300	3	121	600	12.3
	a	b	c	d	e	

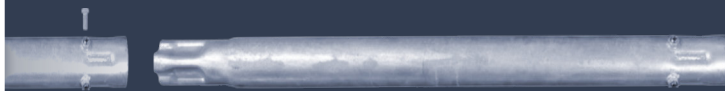
Sarcini maxime suportate in sol semi-solid

	APASARE, kN (kg)	TRACTIUNE, kN (kg)	INCOVOIERE, kN (kg)
U 68x685x1.8 - 71	2.5 (255)	1.7 (173)	0.5 (51)
U 68x865x1.8 - 91	6.2 (632)	4.6 (469)	2.55 (260)
U 76x1135x2.5 - 101	16.5 (1683)	9.5 (969)	4.5 (459)
U 114x1300x3 - 121	28 (2855)	15.3 (1560)	6 (612)

1 kN ~ 101,97 kg. Toate valorile sunt aproximative și pot fi utilizate ca estimări pentru calculele inițiale. Testele de încărcare reale sunt obligatorii! Producătorul nu este responsabil pentru daunele cauzate din cauza erorilor în calculul încărcăturilor.



ACCESORII



Extensie de un metru profil G

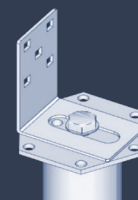
Adaptor din M în U



Adaptor din G în M



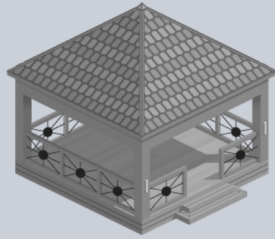
Adaptor din M în suport L



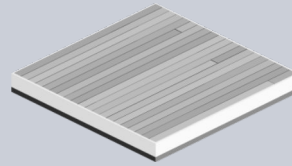
ȘURUBURI FUNDAȚIE



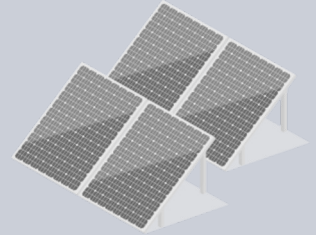
CARPORT



FOIȘOARE



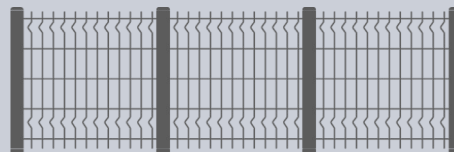
TERASE



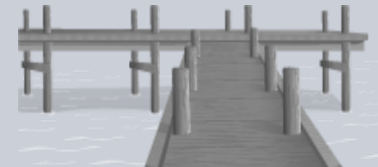
PANOURI FOTOVOLTAICE



PANOURI PUBLICITARE



GARDURI



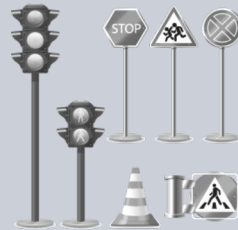
PONTOANE



BANCI



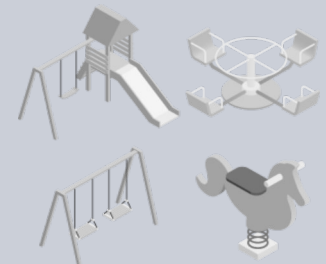
LEAGANE



SEMNE CIRCULATIE



ILUMINAT STRADAL



MOBILIER URBAN



www.SuruburiFundatie.ro



contact@suruburifundatie.ro



+4 0720 452 788



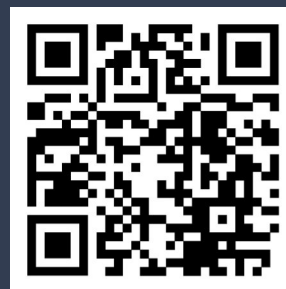
Ilfov, Clinceni, Rozelor 10a



www.facebook.com/NZEBConstruct



www.youtube.com/@NZEBConstruct



**PROCES USOR
FACTURI REDUSE
MEDIU CURAT**



**INSTALARE
RAPIDA**



**SOLUTIE
ECONOMICA**



**PRODUS
SUSTENABIL**



**FARAB
ETON**



**FARA
SAPATURI**